

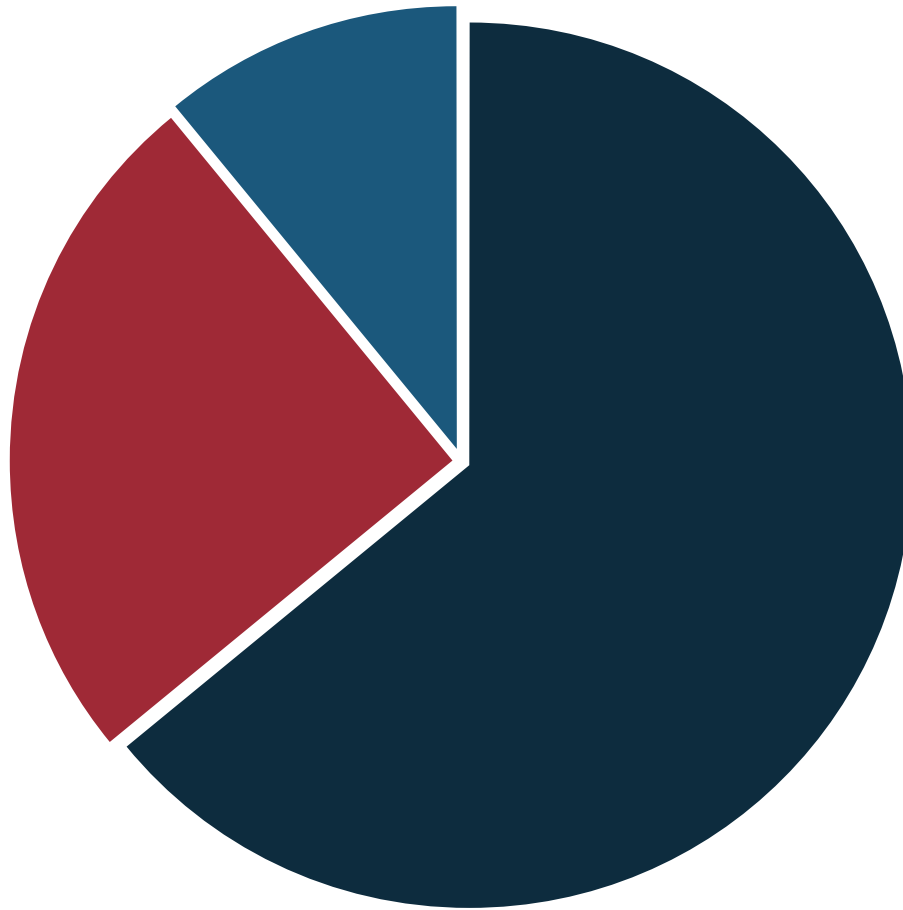
**Deputy Chairman of the State Migration
Service under the Government of
the Kyrgyz Republic
ASANBAYEV A.**



Actual changes in the conditions of stay of migrant workers from the EEU countries in the Russian Federation

There are about **750 thousand** citizens of the Kyrgyz Republic being outside of the country in different seasons.

They are:



| Russian Federation
< 570 thousand

| Republic of
Kazakhstan < 130
thousand

| far abroad - around
30 thousand

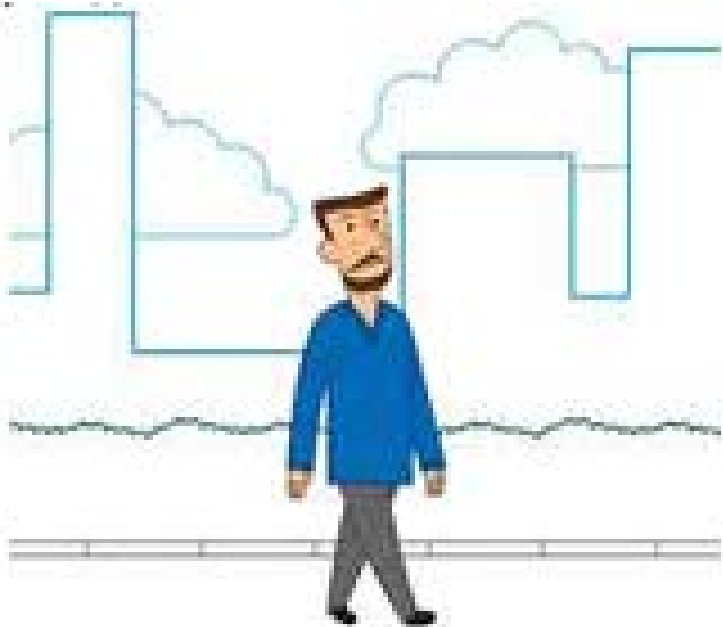
In accordance with Section 26 of the Treaty “On the Eurasian Economic Union”, benefits came into effect to facilitate the procedure for residency and employment of migrant workers in the participant states of the EEU:

- Russian Federation,
- Republic of Kazakhstan,
- Republic of Belorussia,
- Republic of Armenia



Prior to the entry into force

Dates of stay without registration
are determined by domestic
legislation



After the entry into force

A worker and his family members
can stay without registration up to
30 days

Registration is done for the
duration of labor or civil contract



Prior to the entry into force

After the entry into force



Dates of stay without registration are determined by domestic legislation (in accordance with norms of bilateral agreements)

Registration is done for the period of employment patent validity



After 30 days of arrival one must get migration registration at the place of residence at the authorized bodies.

Registration is done for up to 90 days from the date of entry.



Prior to the entry into force

After the entry into force

It is required to obtain a work permit/employment patent.

To do this:

- Purchase a policy of voluntary medical insurance (VMI);
- Undergo a medical examination;
- Pass the exam on the Russian language, history and basics of Russian legislation



When hiring workers sign an employment or civil contract



Prior to the entry into force

Recognition of diplomas and qualifications in accordance with the laws of the state of employment



After the entry into force

The educational and qualifications certificates issued in the Union States are recognized when hiring*



Prior to the entry into force

- Migrant workers pay income tax in advance (purchase an employment patent)



After the entry into force

- From the first day of work, the worker's income is taxed at the rate of 13% as well as a citizen of the Russian Federation



Prior to the entry into force

No need to leave the Russian Federation to extend the employment patent for a period of not more than 12 month



After the entry into force

Without leaving the territory of the employment state to enter into a new employment or civil agreement within 15 days



Prior to the entry into force

Rights in accordance with the legislation for foreign nationals



After the entry into force

Social welfare and health care for workers and their family members is in the same manner and under the same conditions as for the citizens of the country of employment



Prior to the entry into force



After the entry into force

After signing the Agreement on the provision of pensions for workers of the Member States of the Eurasian Economic Union



The problems faced by migrant workers



- Registration of migrant workers at the place of actual residence
- Social protection of migrant workers
- Determination of the period of temporary stay of the worker doing business as self-employed individual
- Exemption of citizens - migrant of EEU countries from filling-in the migration card and stay 30 days without registration.

Restricting entry to the territory of the Russian Federation



At the beginning of 2015 the number of persons with a temporary limited entry into the territory of the Russian Federation was **more than 190 thousand**, and as of October 1, 2016 it made **116 727 citizens** of the Kyrgyz Republic.

51 thousand of these are banned by the court decision.



Thank you for your attention!

* Pictures were taken from the “Labour migration and social security of workers in the Eurasian Economic Union” brochure